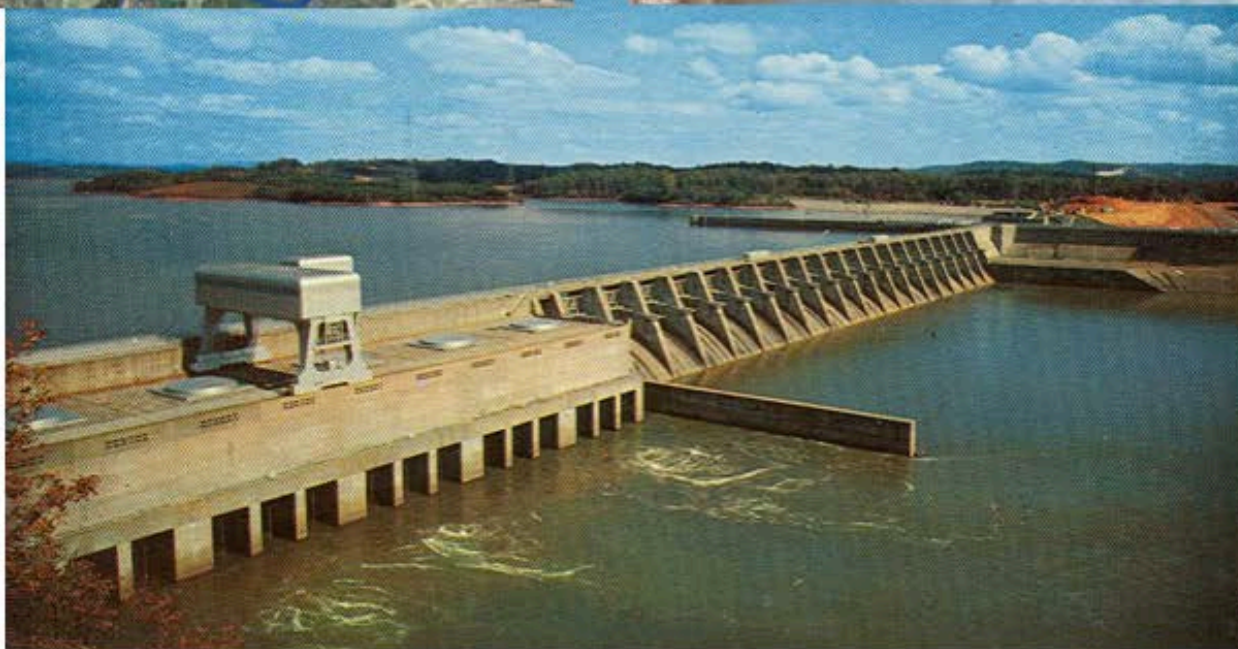
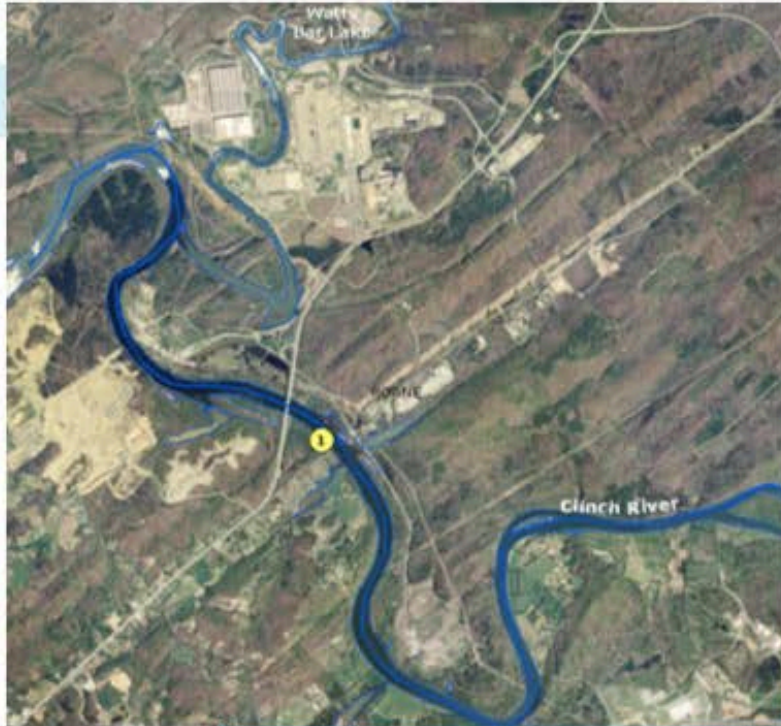
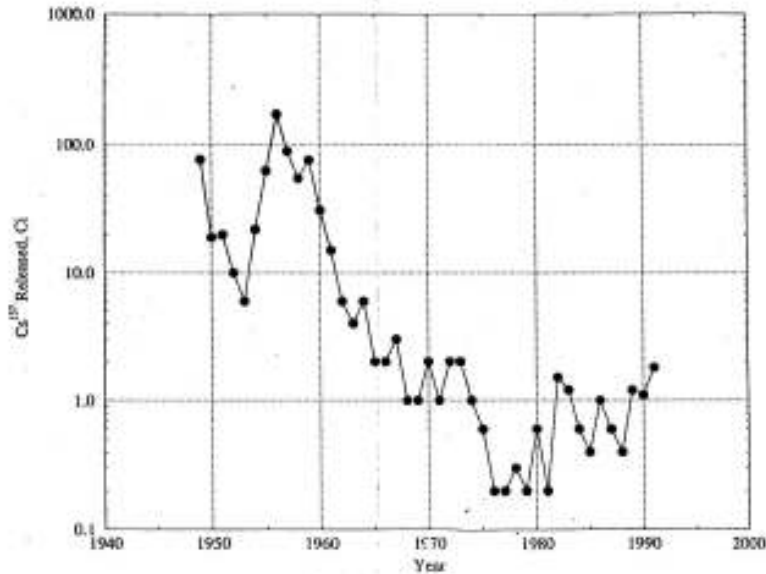


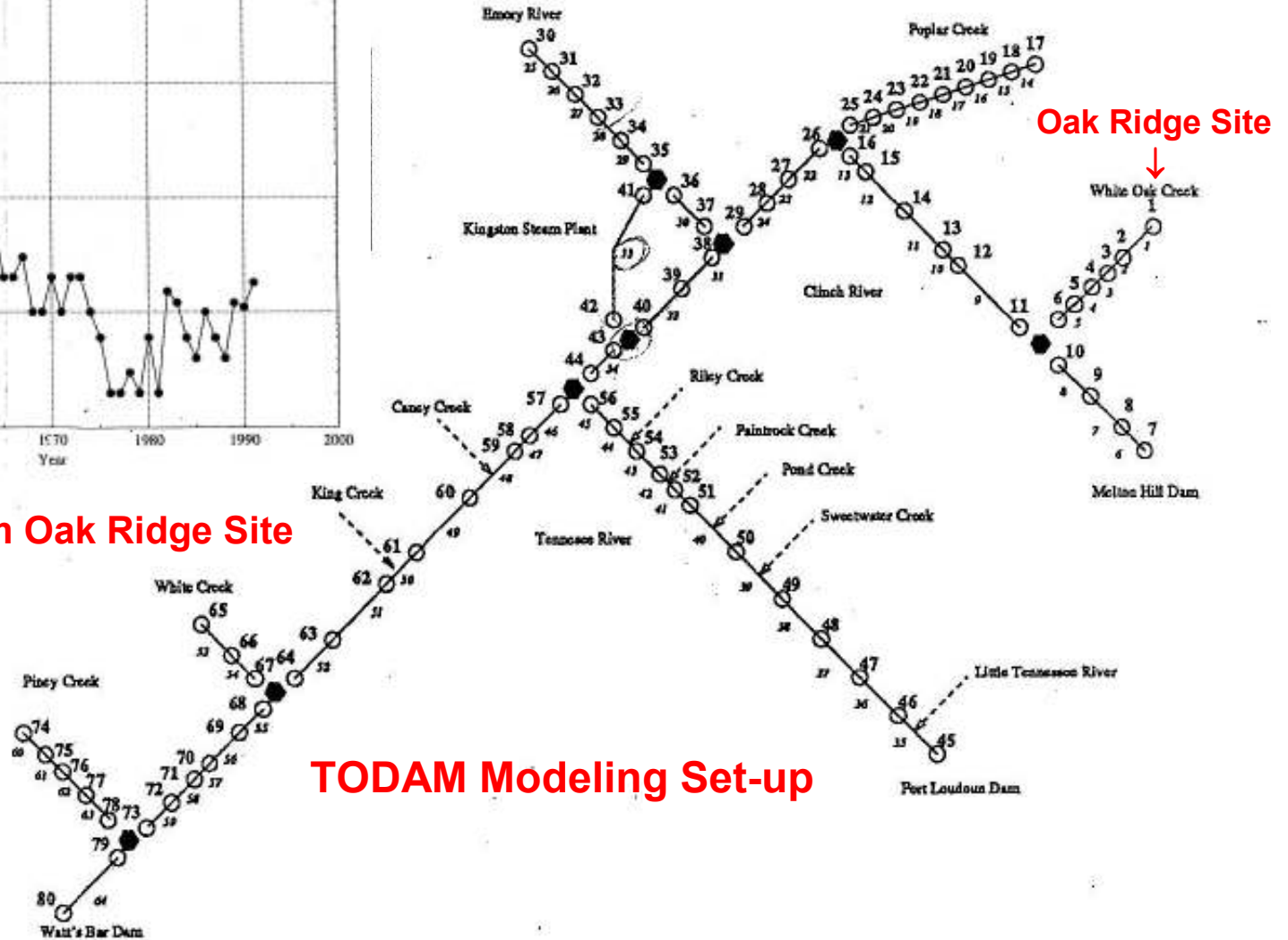
The Clinch River and Tennessee River with Watts Bar Dam



Clinch and Tennessee River Contamination by ^{137}Cs Releases from Oak Ridge Site

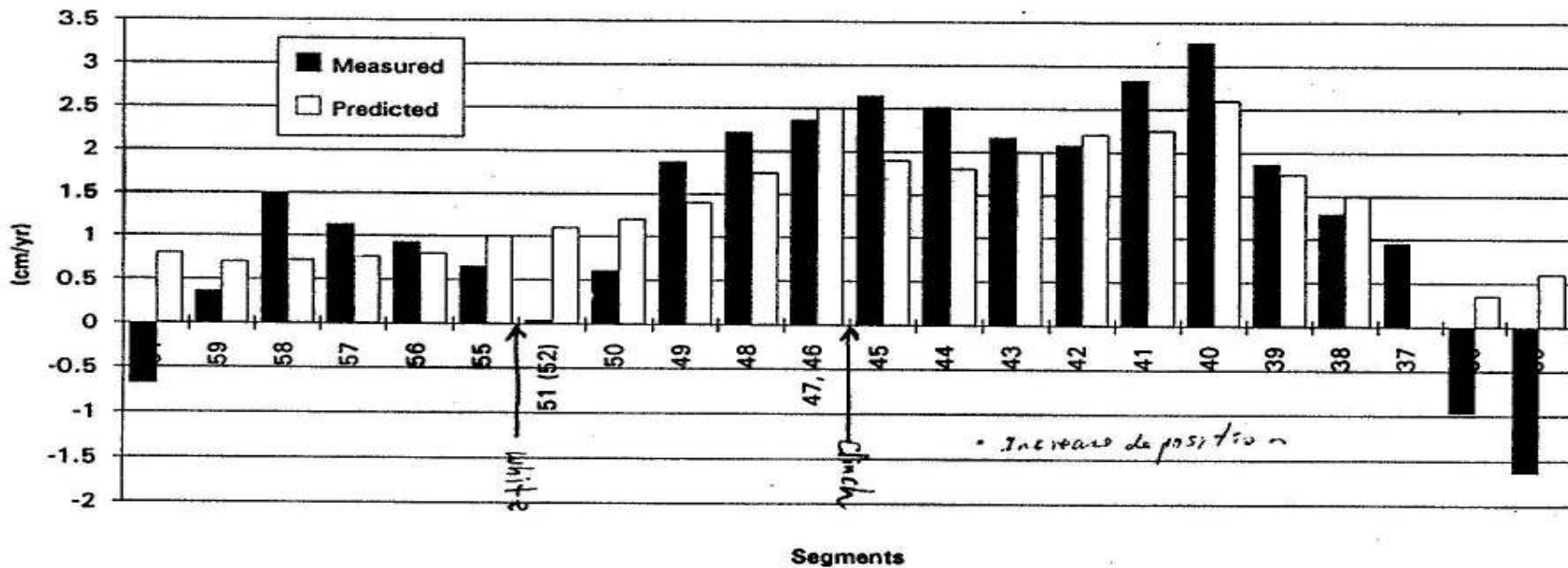
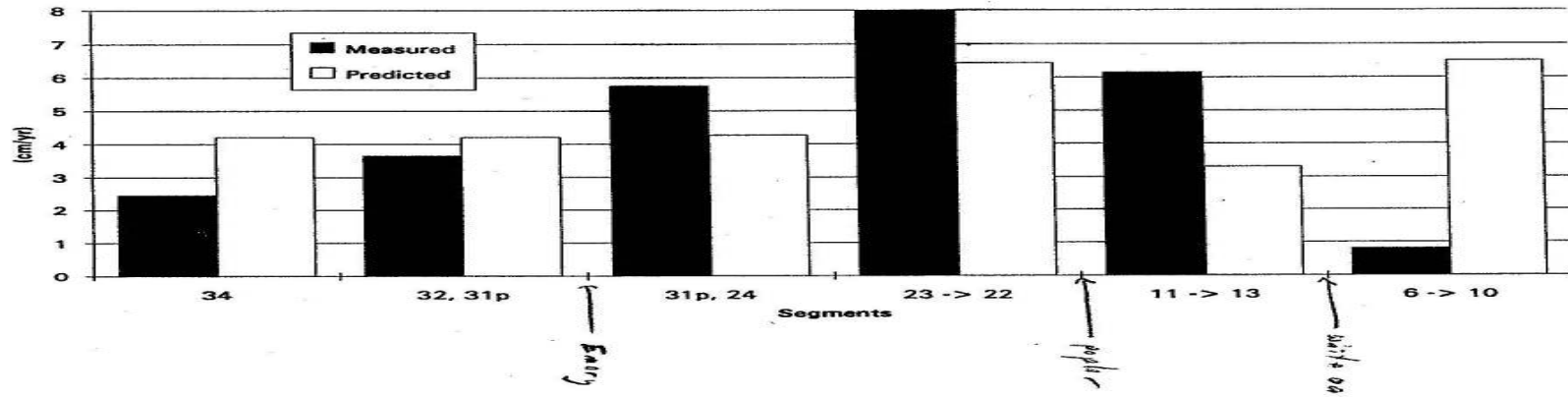


^{137}Cs Release from Oak Ridge Site

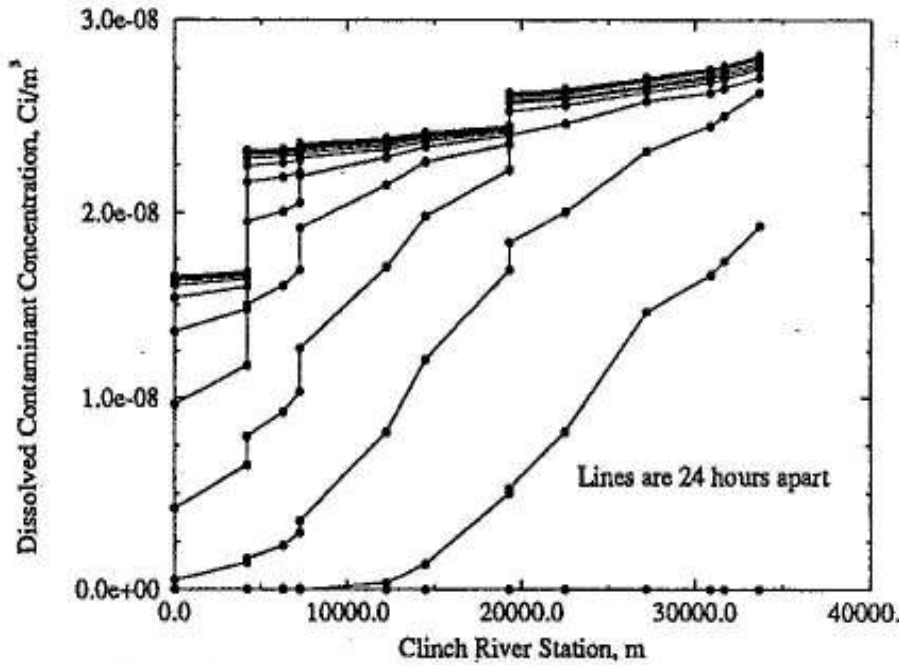


TODAM Modeling Set-up

The Clinch and Tennessee River Sedimentation Rates over Decades: Yasuo Onishi's TODAM Code Validation



Predicted ^{137}Cs Concentrations in the Clinch and Tennessee Rivers by TODAM Code



Dissolved ^{137}Cs

Sediment-sorbed ^{137}Cs

